

FIN-Window Nova-line N 90+8
aluminium-PVC

Episcopal office building in Madrid

Spiritual "Passive House" with FIN-Window and FIN-Door.

The "Sedes Sapientiae" of the Spanish Bishops' Conference includes offices, conference rooms and a library. The façade, with its symmetrically arranged shapes and glass entrance area, radiates a warm, harmonious spirituality.

Not least thanks to the installation of high-quality aluminium-PVC windows and doors, this four-storey building has achieved Passive House standard, which ensures very good indoor air quality and minimal energy consumption. The Max-Valor triple insulation glazing of the windows guarantees both outstanding insulation and excellent values in terms of total energy transmittance and light transmittance. The very narrow frames of the Nova-line design line allow plenty of natural light to enter the rooms: at the same time, external Venetian blinds provide flexible and effective solar protection and additional heat protection. The barrier-free, flat threshold of the entry door with its anti-panic function permit ease of access from the outside to the inside.

Type of building	Public building
Construction	2020
Project	New build/conversion
Planning	Alfonso Rubinos, Begoña Viejo
Country	Spain
Region	Madrid
Locality	Madrid
Photographer	Nacho del Rio-Efecto Niepce



Insta-Hogar
C/ EBANISTERIA, 2
28850 TORREJON DE ARDOZ. MADRID
Spain
916771296
instahogar@instahogar.es
www.instahogar.com

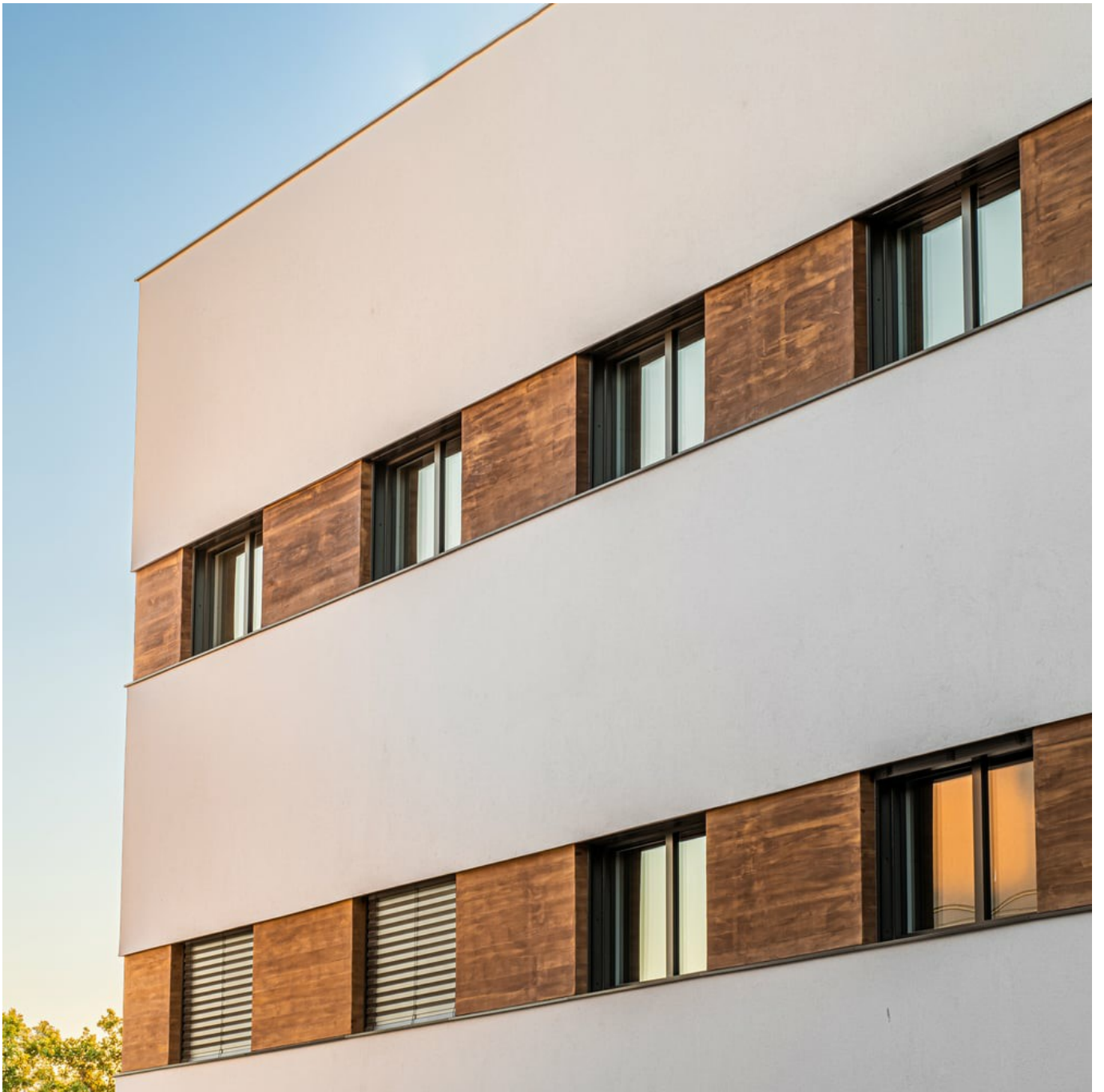




















Products used

U_w - Heat transmittance coefficient of window element

R_w - Sound insulation properties of a window

npd - No performance determined



FIN-Window Nova-line N 90+8

aluminium-PVC

U_w 1-sash 2-/3-glazing:

1,2 / 0,78 W/m²K

U_w 2-sash 2-/3-glazing:

1,2 / 0,86 W/m²K

R_w Standard:

36 (-2;-5) db

R_w Best value:

45 (-1;-3) db

Product data sheets and more information at

www.finstral.com/range