



FIN-Slide Slim-line Cristal 170
aluminium-aluminium

Villa in Almería

Futuristic building with smart windows and lift-and-slide doors.

This villa dares to take an architectural leap into the future! The different textures of the futuristic façade make every single corner special. The straight lines allow a surprising amount of light to enter and lend the building its avant-garde style, which is continued in the angular lines of the windows and the lift-and-slide doors.

The large glass surfaces of the lift-and-slide doors give the construction its lightness and blend seamlessly into the modern elegance of the façade. Here, the grey aluminium frames gently accentuate the white tones of the new building, while at the same time creating a connection to the grey tones that are inserted into the façade at varying intervals. The innovative FIN-Fix assembly frame was used for installation. This ensured a smooth installation without dirt, noise or damage to the products – because the windows are only installed during the dry construction phase after completion of the rough construction work.

Type of building	Single-family dwelling
Construction	2020
Project	New build/conversion
Planning	Basse
Country	Spain
Region	Almería
Locality	Almería
Photographer	Ana Mora



Windows Studio
C/ PILARICA, 2 BAJO
04009 ALMERÍA
Spain
950 042 533
info@windowsalmeria.com
www.windowsalmeria.com

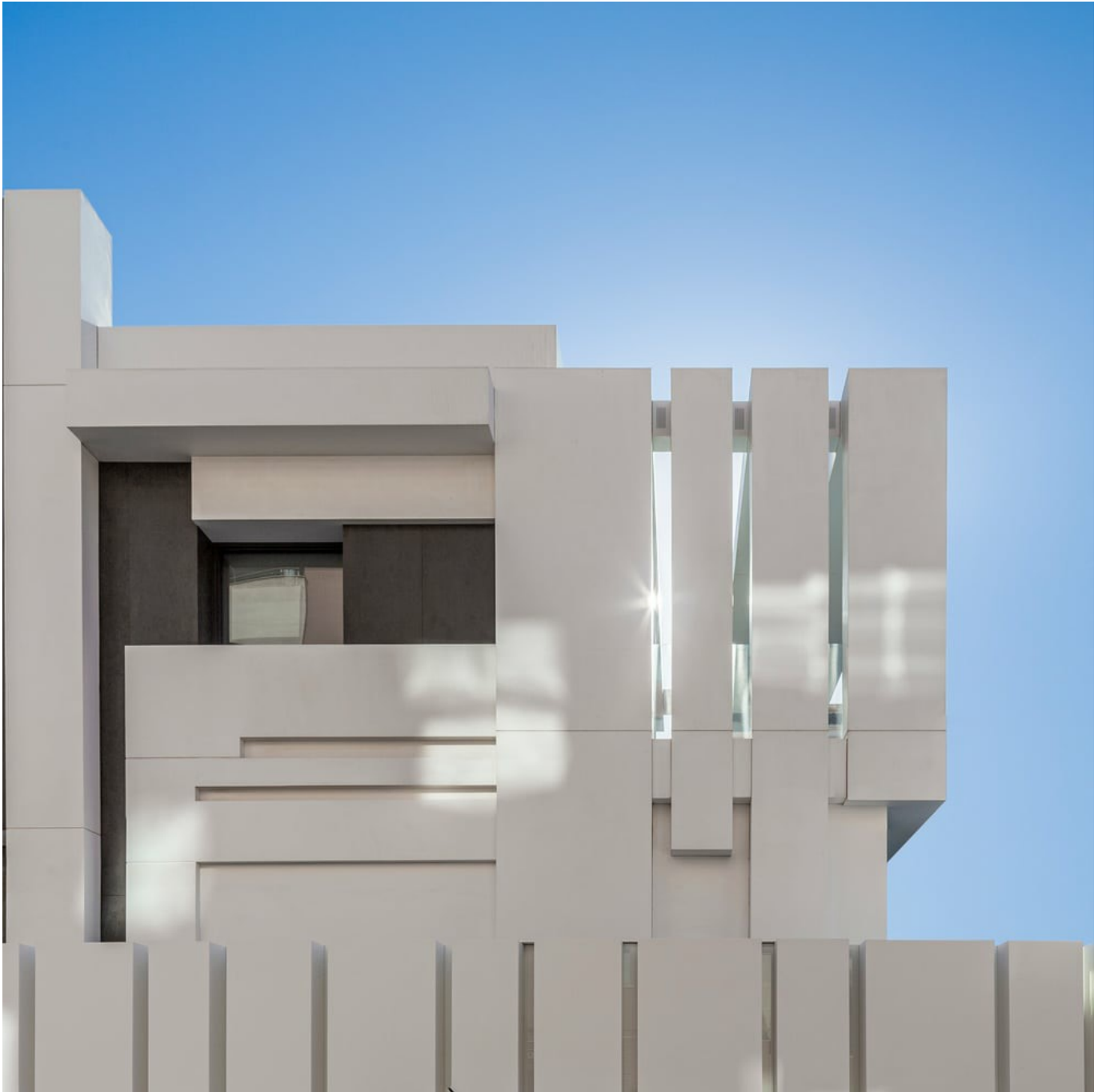












Products used

U_w - Heat transmittance coefficient of window element

R_w - Sound insulation properties of a window

npd - No performance determined



FIN-Slide Slim-line Cristal 170

aluminium-aluminium

U_w 1-sash 2-/3-glazing:

- / 0,91 W/m²K

U_w 2-sash 2-/3-glazing:

- / 1,0 W/m²K

R_w Best value:

39 (-1;-3) db



FIN-Project Step-line Cristal 78/88

aluminium-aluminium

U_w 1-sash 2-/3-glazing:

- / 0,82 W/m²K

U_w 2-sash 2-/3-glazing:

- / 0,98 W/m²K

R_w Standard:

40 (-2;-6) db

R_w Best value:

42 (-2;-5) db



FIN-Fix

for windows and doors

Product data sheets and more information at

www.finstral.com/range